

CONCEPT PLAN
HIDDEN VALLEY SUBDIVISION
~85 SOUTH 650 WEST
CITY COUNCIL MEETING
MAY 21, 2015

Utilities:

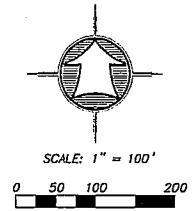
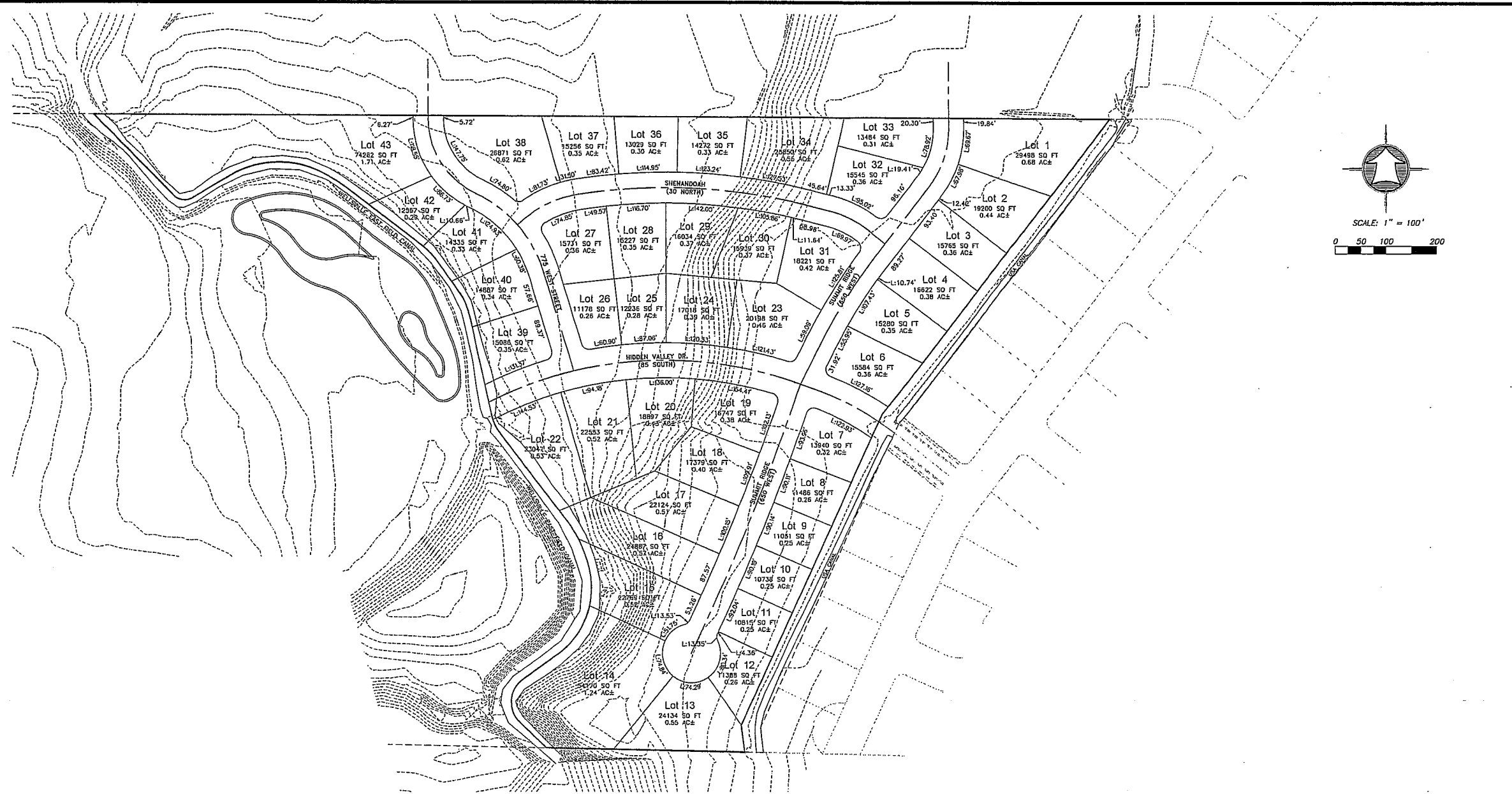
All are available in this area. They are stubbed in at 85 South from the South Cache Subdivision. A sewer lift station will be required with this development. The utility layout will be dealt with during the preliminary plat process.

Roads:

These will be 68 ROW for main roads and 60 Row for secondary streets. They probably will need to change the address for 30 North to 10 South.

Other:

The Planning Commission went on a site visit to the location with the developer. This property has great views and contours. It has the potential to be a nice addition to the city. They will need to work out an agreement with the canal company to address storm water and safety issues for the preliminary plat. The Planning Commission recommends approval.



CONCEPT PLAN
SCALE 1 in. = 100 feet

NOTES

REV#	REVISION DESCRIPTION	DATE

Skyline
A/E/S, INC.
Architecture / Engineering / Surveying
95 W. Golf Course Rd., #101, Logan, UT 84321
(435) 752-8501 / Fax (435) 752-8597

This document and the ideas incorporated herein, as an instrument of professional service, are the property of SKYLINE A/E/S, INC. and are not to be used in whole or in part, for any other project without the written authorization of an authorized representative of SKYLINE A/E/S, INC. Unauthorized use will be prosecuted to the fullest extent of the law.

Professional Seal:

Copyright © 2015 SKYLINE A/E/S, INC.

FOR REVIEW ONLY

Project Title:
HIDDEN VALLEY
HYRUM, CACHE COUNTY, UTAH

Sheet Title:
CONCEPT PLAN

Drawn By: D BUCKTON	Project Number: 15-027	Drawing Type:
Designed By: M PIERCE	Date: 4/27/15	Sheet Number: 1
Reviewed By: M PIERCE	Sheet Scale: AS SHOWN	of 1