

LARSEN SETBACK DEVIATION
494 S 390 EAST
PLANNING COMMISSION MEETING
JULY 9, 2020

ZONING: R-2 (Residential)

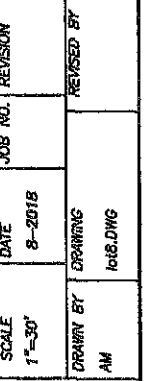
UTILITIES:

Power:	N/A
Culinary:	N/A
Sewer:	N/A
Irrigation:	N/A

PARKING & ROADS: N/A

NOTES: Current set back requirements state that accessory buildings that are not a detached garage, be placed ten (10) feet behind the rear line of the house and no closer than one (1) foot from the property line. The applicant desires to place a shed in the side-yard at their home.

OWNERSHIP OF DOCUMENTS
This document, including the ideas and designs incorporated herein, is an instrument of professional service, is the property of ALLIANCE CONSULTING ENGINEERS and shall not be used, in whole or in part, for any other project without the written permission of an authorized representative of ALLIANCE CONSULTING ENGINEERS. Unauthorized use will be prosecuted to the fullest extent of the law.
Copyright © 2003
by ALLIANCE CONSULTING ENGINEERS



**ALLIANCE CONSULTING
ENGINEERS**
150 EAST 200 NORTH SUITE P
LOGAN, UTAH 84321
(435) 755-5121

SHEET
1
OF
1 SHEETS